



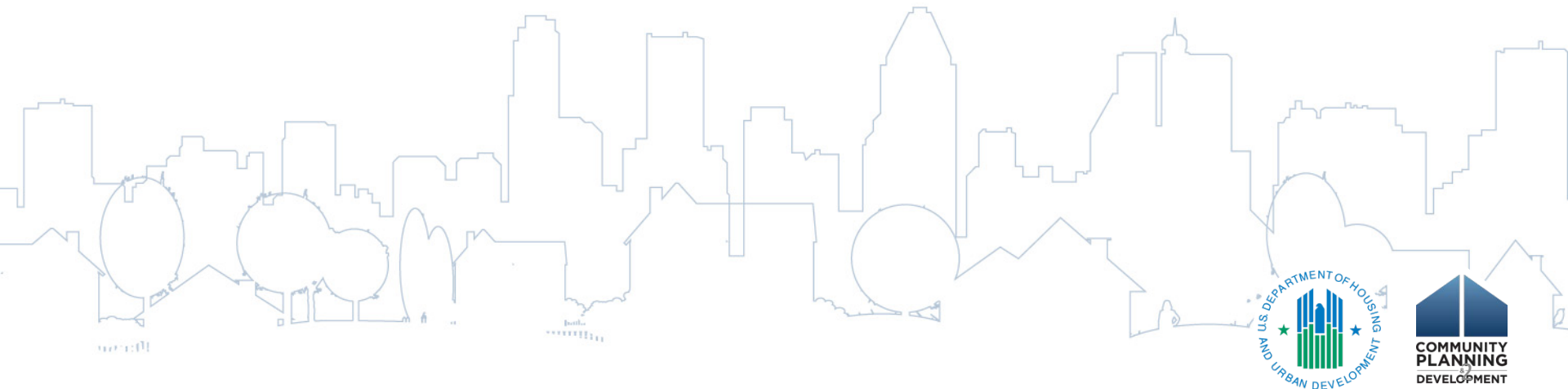
Update on HUD's Homeless Funding and Priorities

Mark Johnston
Acting Assistant Secretary
Office of Community Planning and Development



Overview of the Presentation

- Update on Status of Regulations
- FY 2013-2015 Budgets and Implications
- HUD's Policy Priorities
- Focus on Coordinated Assessment
- Next Steps for Technical Assistance



Status of the Regulations

- **Published Final Rules:**
 - ✓ Defining Homeless – amendments to the SHP and S+C regulations
- **Published Interim Rules:**
 - ✓ Emergency Solutions Grants Program with conforming amendments to the Consolidated Plan
 - ✓ Continuum of Care Program
- **Published Proposed Rules:**
 - ✓ Homeless Management Information Systems
 - ✓ Rural Housing Stability Assistance Program
- **Rules Pending Publication**
 - ✓ Final Rule Defining Chronically Homeless



FY 2013 Budget

	President's Request	Appropriated, after Sequestration	Expected Expenditures
Total Amount	\$2,231	\$1,933	\$1,933
Emergency Solutions Grants	\$286	\$215	\$215
Continuum of Care	\$1,937	\$1,593	\$1,700
HMIS	\$8	\$7	\$7
HUD-VASH	\$75	\$75	\$75

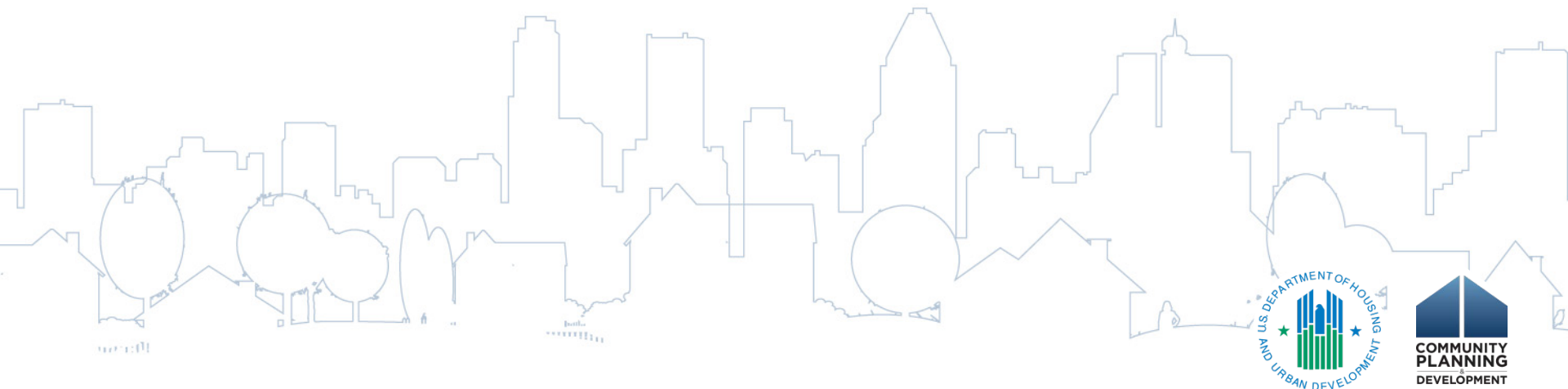
FY 2013 Budget Highlights:

- Sequestration drastically reduced funds available for HUD's targeted homeless programs



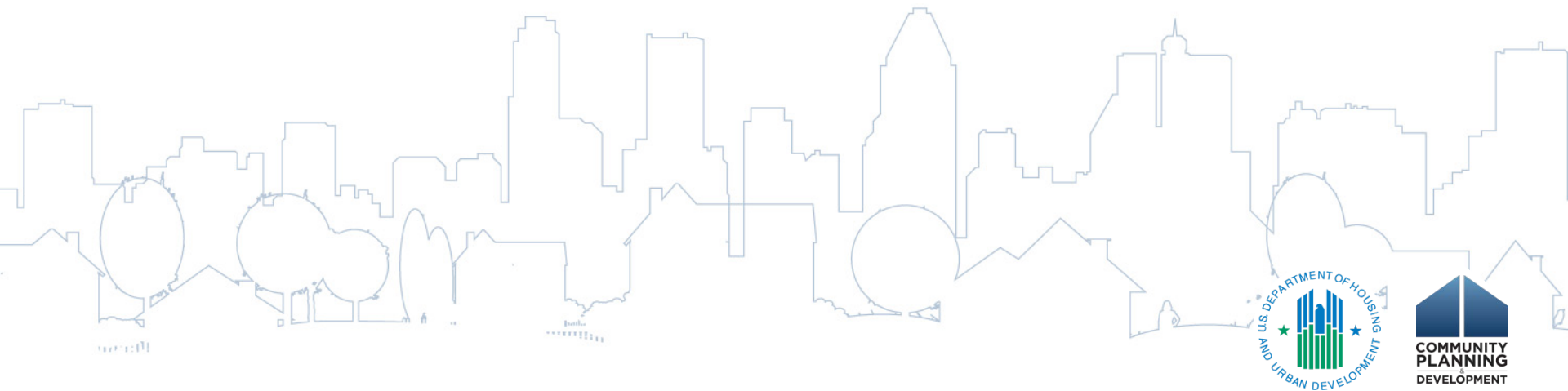
FY 2014 Budget

	President's Request	Appropriated
Total Amount	\$2,381	\$2,105
Emergency Solutions Grants	\$346	\$250
Continuum of Care	\$2,027	\$1,815
HMIS	\$8	\$6
HUD-VASH	\$75	\$75



FY 2015 Budget

- \$2.406 included for HAG
- Includes funding for 37,000 new units of PSH for chronically homeless



Policy Priorities

- The FY 2013-FY 2014 CoC Program NOFA established 7 policy priorities:
 1. Strategic Resource Allocation
 2. Ending Chronic Homelessness
 3. Ending Family Homelessness
 4. Other Priority Populations: Youth and Veterans
 5. Removing Barriers to CoC Resources
 6. Maximizing the Use of Mainstream Resources
 7. Building Partnerships



1. Strategic Resource Allocation

- Reflect on what changes you can make to be most effective
- Review all projects within the geographic area for their effectiveness at meeting established performance goals
- Reallocate funds from underperforming, obsolete, or ineffective projects to new projects based on promising or proven models



2. Ending Chronic Homelessness

- Increase the number of beds specifically dedicated for the chronically homeless
- Priority should be given to the chronically homeless in PSH not already dedicated to the chronically homeless through turnover
- A Housing First approach should be used when designing PSH projects



3. Ending Family Homelessness

- Most families experiencing homelessness need short- or medium-term rental assistance or affordable housing and connection to benefits and community-based supports
- Rapid re-housing (RRH) funding should be targeted to households with children living on the streets or in emergency shelters



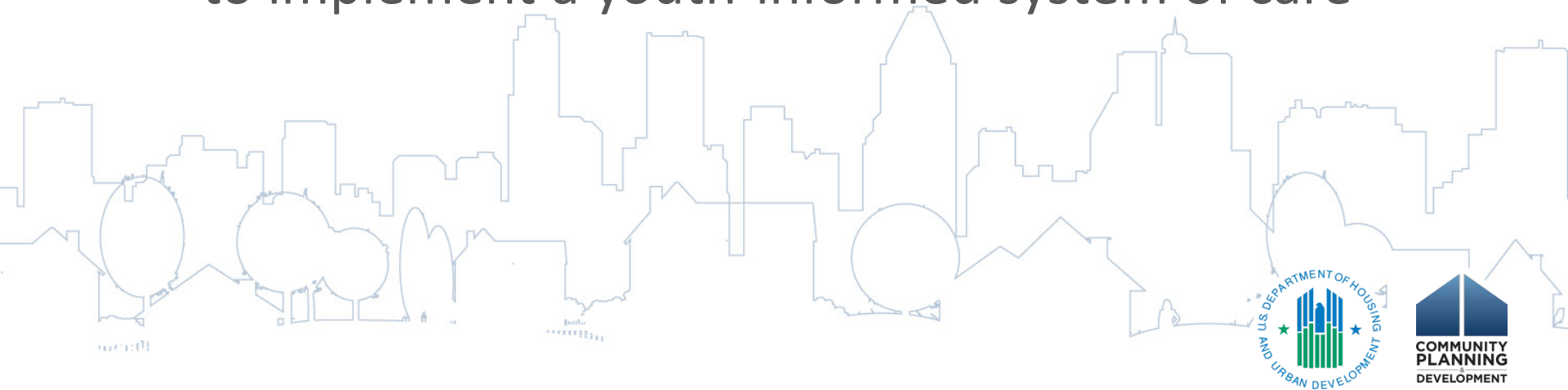
4. Ending Veteran Homelessness

- Search for resources and make investments in veteran-centric housing and health programs
- Adopt evidence-based practices such as housing first to house veterans
- Prioritize VA eligible chronically homeless veterans for HUD-VASH
- To the extent possible, prioritize veterans who are ineligible for VA services and their families



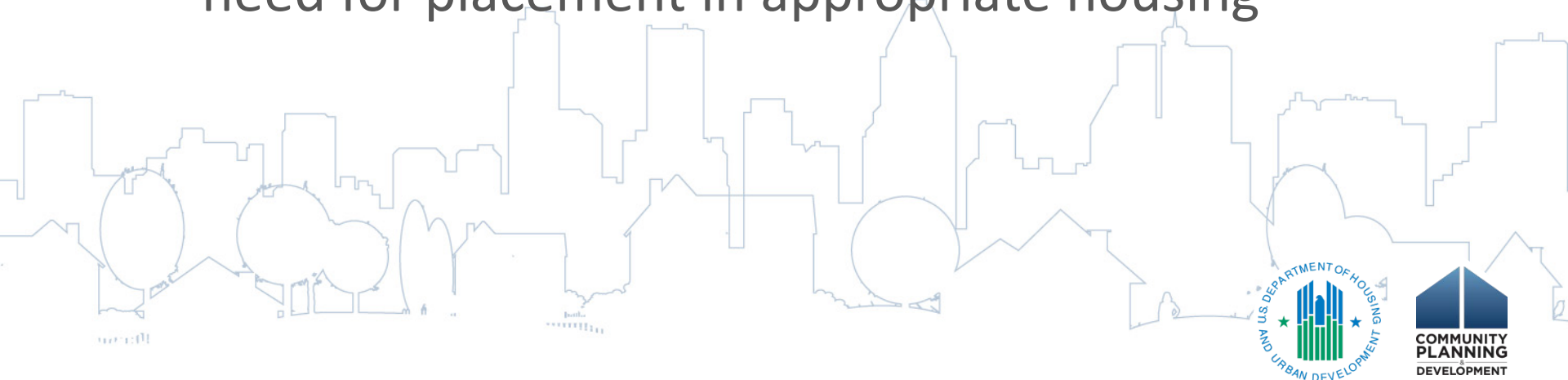
4. Ending Youth Homelessness

- Need to be able to identify and describe the needs of homeless youth within the geographic area
- Partner with schools, the child welfare system, and Runaway and Homeless Youth providers to implement a youth-informed system of care



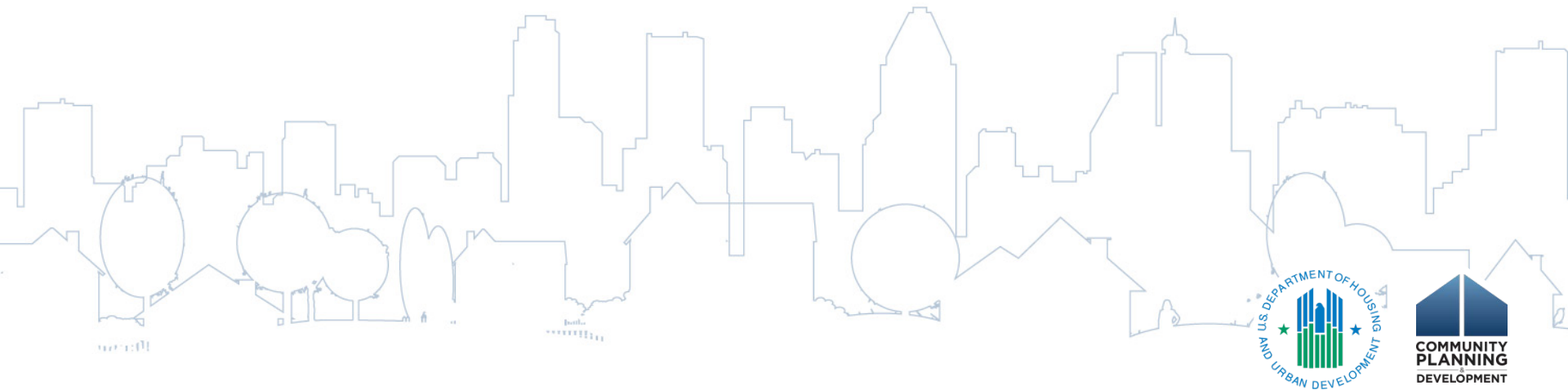
5. Removing Barriers

- Use coordinated assessment to match households to appropriate intervention
- Review transitional housing models for cost-effectiveness, performance, etc.
- Prioritize those who are identified as most in need for placement in appropriate housing



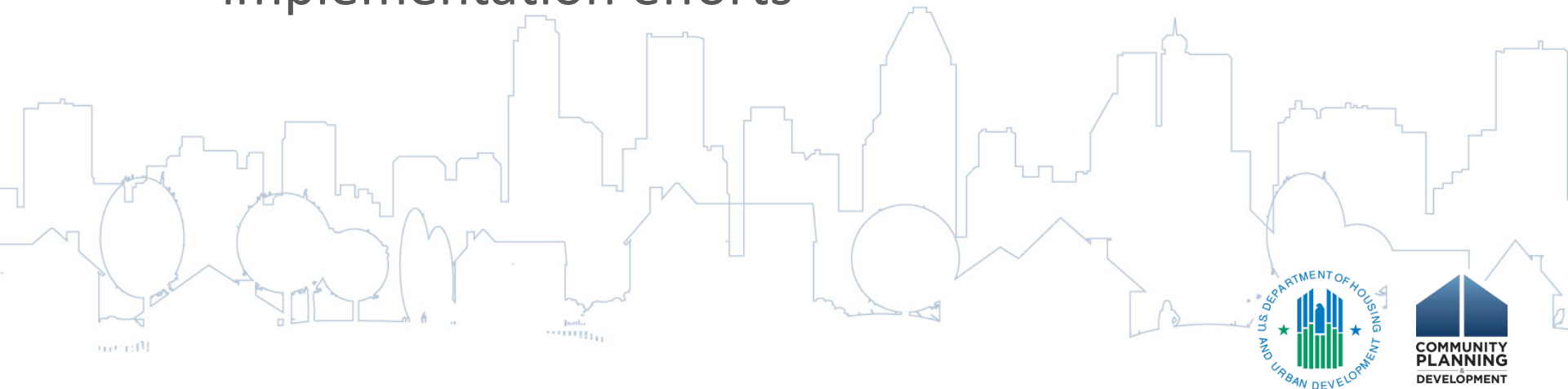
5. Removing Barriers

- Review transitional housing models within the geographic area for cost-effectiveness, performance, and for the number and type of criteria used to determine eligibility and determine if RRH may be a better model



6. Mainstream Resources

- HUD strongly encourages CoCs and project applicants to ensure that they are maximizing the use of all mainstream services available
- CoCs should be proactively engaged in ACA implementation efforts



7. Building Partnerships

- Proactively seek to engage in partnerships with PHAs within geographic area
- Assess the extent to which philanthropy plays a role within the community and consider how to engage with philanthropic organization to maximize and increase progress towards ending homelessness



Focus on Coordinated Assessment

- A powerful tool for improving system-wide entry, assessment, and referral processes.
- Designed to improve the following:

Service Provision

- Referral appropriateness
- Assessment consistency
- Multi-provider coordination
- Assessment time
- Placement time
- Service access

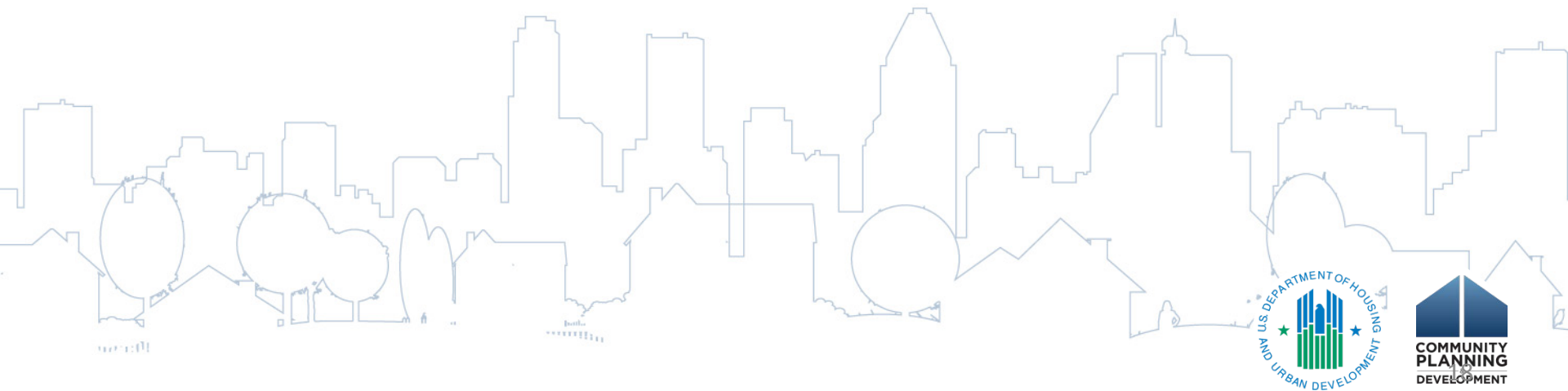
Data Management

- Individual tracking
- Resource allocation planning
- System monitoring
- Reporting



Focus on Coordinated Assessment

- The McKinney-Vento Act regulations:
 - CoC's must “establish and operate”
 - CoC recipients must participate
 - ESG recipients must participate





Coordinated Assessment 101

Minimum requirements of the system:

- Covers all geography
- Easily accessible
- Advertised
- Comprehensive and Standard Assessment Tool

Two key elements:

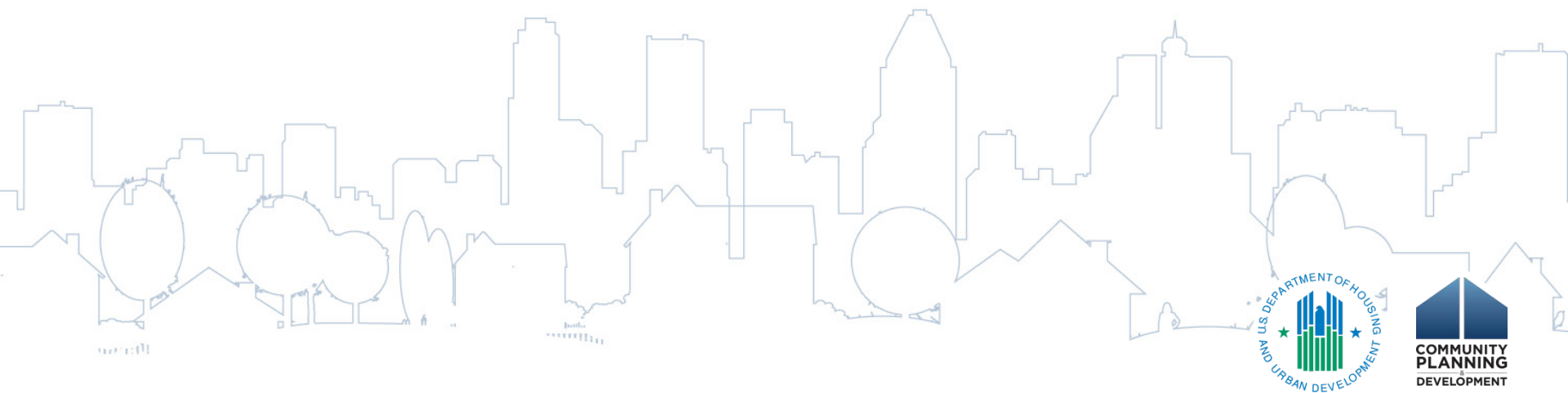
- Standardized access and assessment process for all clients
- Coordinated referral process for all clients





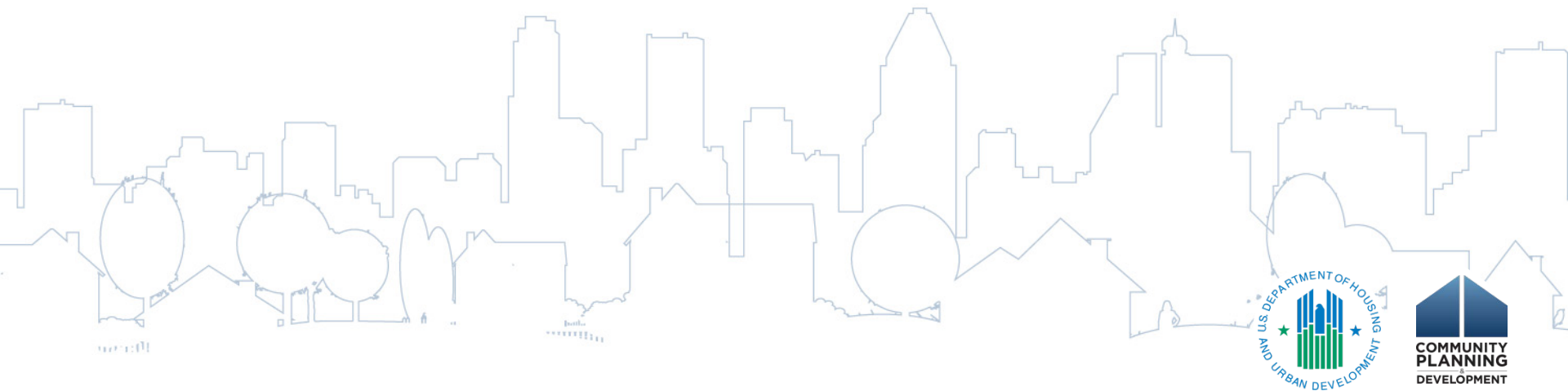
Coordinated Assessment 101

- A standardized access and assessment process for all clients
- A coordinated referral process for clients to receive prevention, housing, and/or other related services



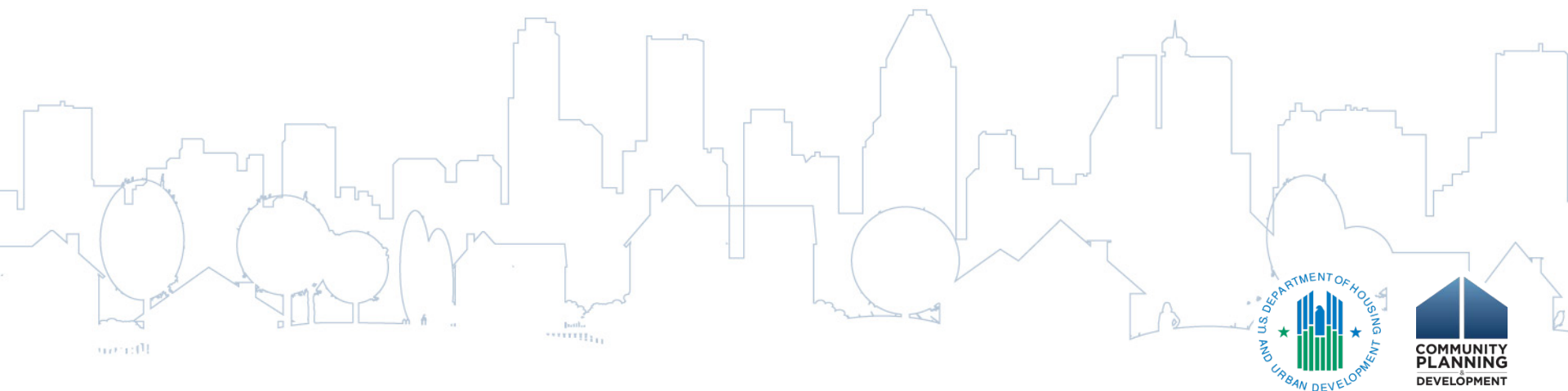
Coordinated Assessment 101

- The question CoCs should be asking:
 - “What housing and service assistance strategy among all available services is best for each household?”



Update on Technical Assistance

- CoC 2.0 Tools
- Start-Up Conferences
- Regional TA



Resources

- Up to date information regarding the McKinney-Vento Act programs, including a copy of the McKinney-Act amended by the HEARTH Act, the ESG interim rule, the CoC interim rule, and TA materials can be found at <http://www.onecpd.info>
- Notification of the availability of future information will be released via HUD's Homeless Assistance listserv. To join HUD's listserv, go to <http://www.hud.gov/subscribe/maillinglist.cfm> and click on "Homeless Assistance Program"



Questions

Submit Questions to HUD's OneCPD Resource Exchange's Ask-A-Question at:

<https://www.onecpd.info/ask-a-question>

- Due to the high volume of questions, please read the regulations and the training materials provided prior to submitting your question to Ask-A-Question

